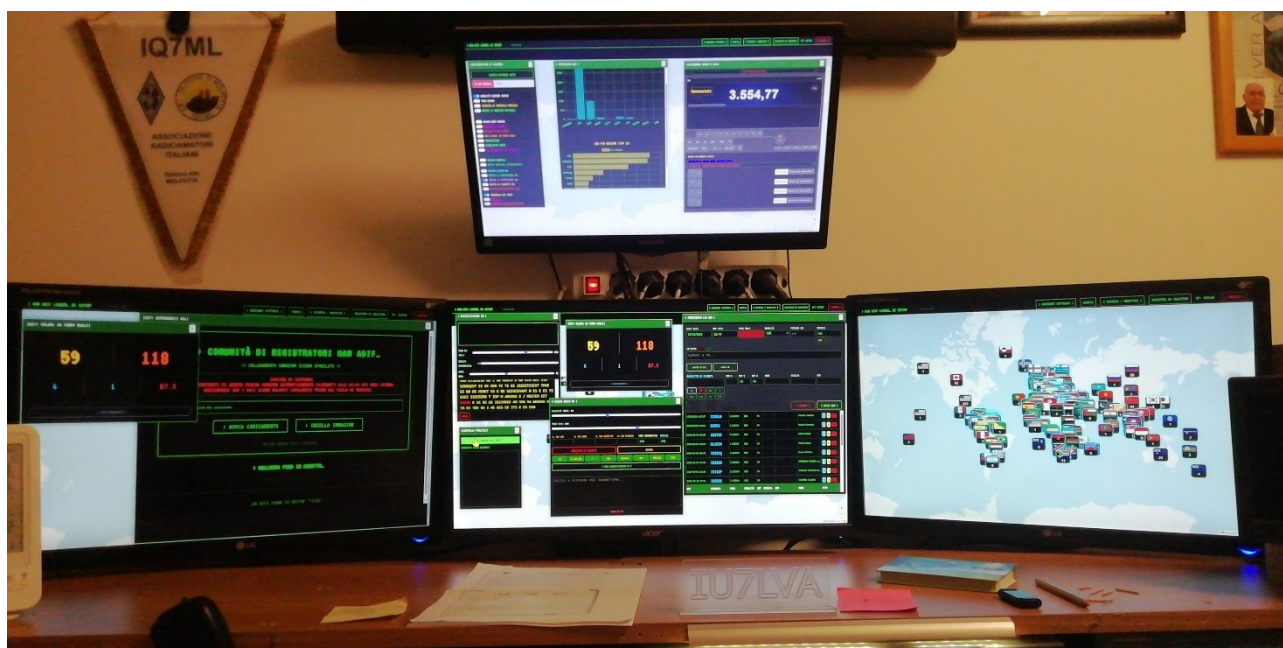


HAM ADIF LOGGER_de IU7IWT

User Manual & Operation Guide

Index

1. INTRODUCTION	2
2. GETTING STARTED (Login & Interface).....	5
3. CONFIGURATION (Window [SYSTEM CONFIG])	6
4. RADIO & CAT SETUP (Windows [CAT CONFIG] & [REMOTE CONTROL]).....	14
5. QSO LOG ENTRY (Windows [QSO LOG ENTRY])	15
6. CW OPERATION	17
7. UTILITIES & TOOLS	18
8. KEYBOARD SHORTCUTS & MACROS	21
9. Example of the configuration file and master file for qrz partial check:.....	21
10. Troubleshooting	22

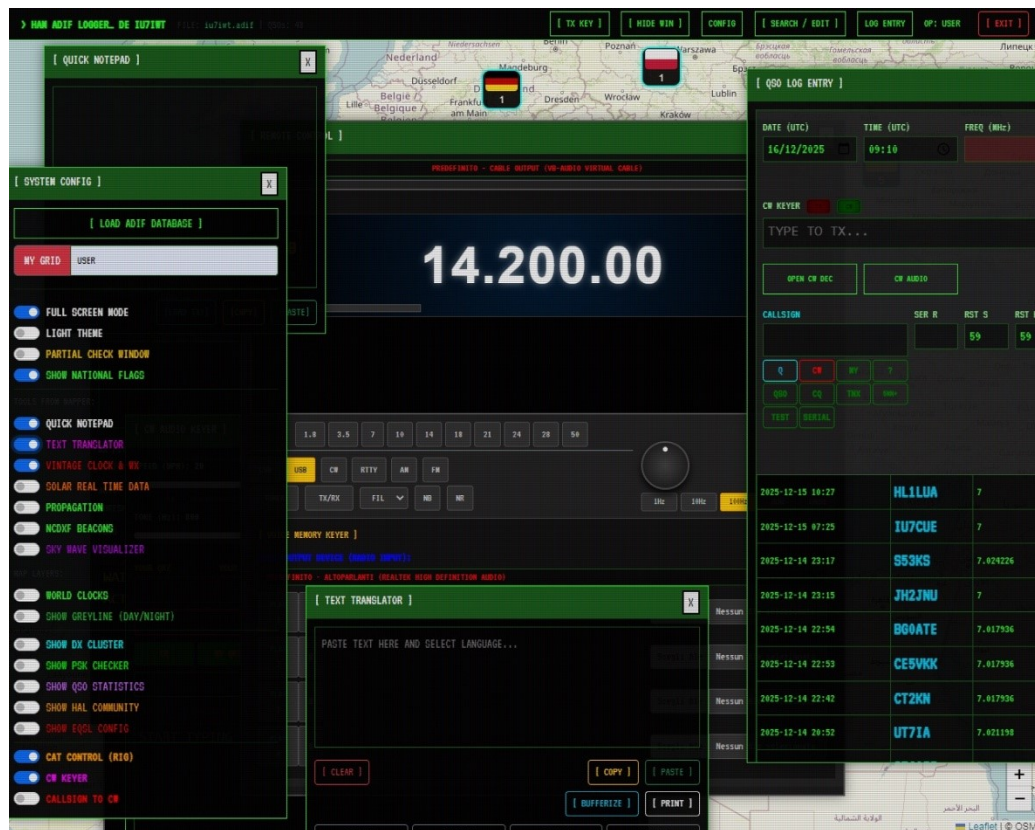


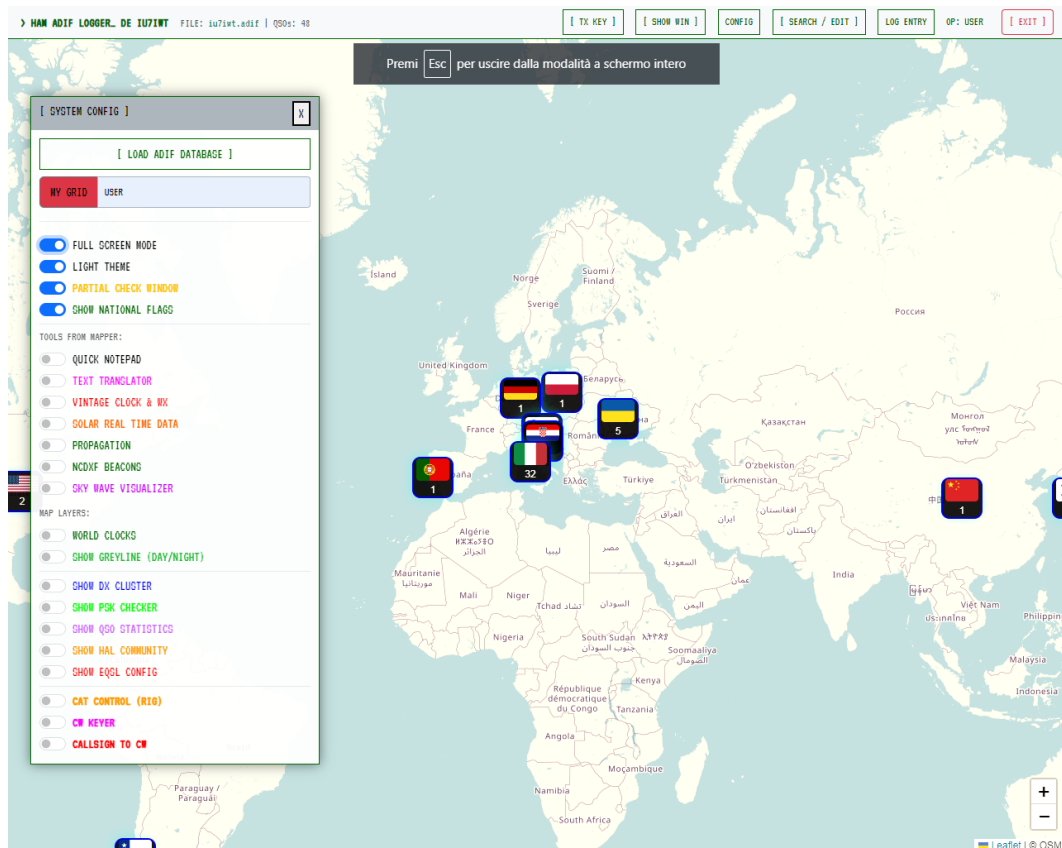
1. INTRODUCTION

Welcome to HAM ADIF LOGGER_, a completely new software concept designed to run exclusively within a single page of your favorite web browser. Unlike traditional software, this logger is "multi-instance." This means you can open the program on multiple monitors or different browser tabs simultaneously; because they access the same underlying database, all instances remain synchronized.

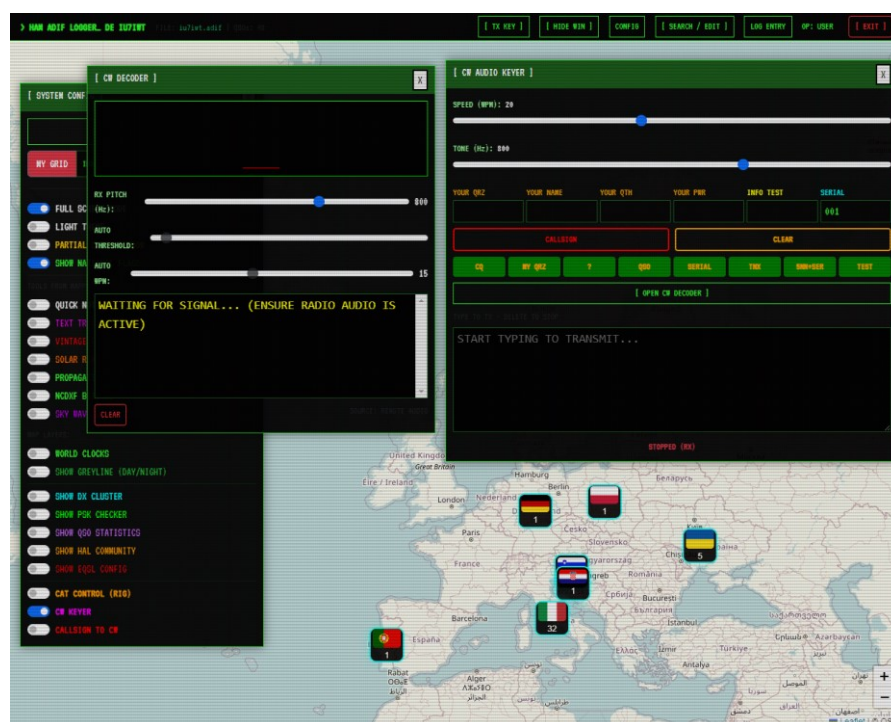
Key Features:

- OS-Style Interface: Floating, resizable, and cascading windows like a real operating system.

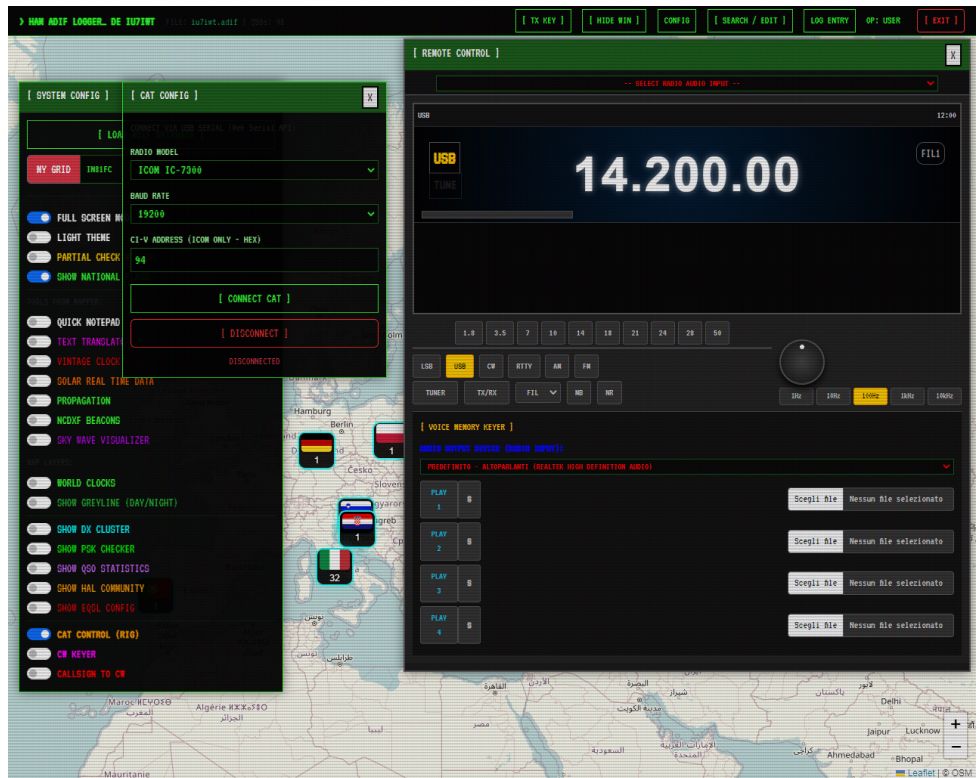




- **Local File System:** The program requires two local files: the contact database (.adif) and the partial control file (.scp).
- **CW via USB Audio:** Telegraphic transmission and reception via the PC/Radio sound card, without external interfaces.



- **CAT Control:** Integrated support via Web Serial API for ICOM, YAESU and KENWOOD.



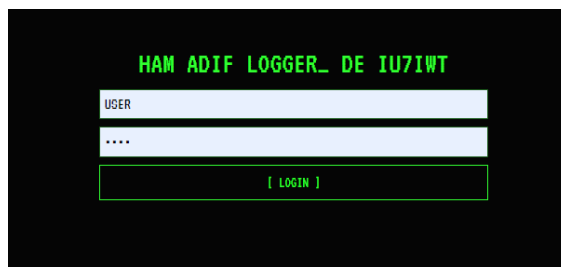
2. GETTING STARTED (Login & Interface)

System Login

Upon startup, you'll be greeted by a login terminal.

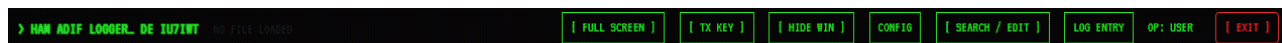
Enter your credentials below:

- **CALL:** USER
- **PASSWORD:** demo.
- **[LOGIN]:** Click to enter in the system.



The Top Bar

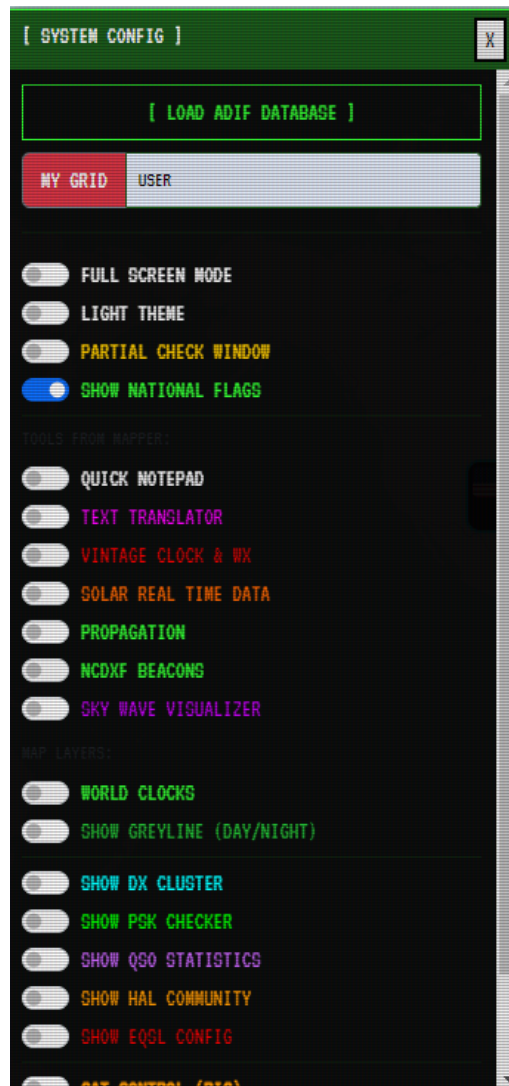
This is the main command bar located at the top.



- **File Status Indicator:** Displays the name of the loaded ADIF file or "NO FILE LOADED".
 - **[TX KEY]:** Crucial key. When clicked, it turns RED (**[TX KEY: ON]**). In this mode, the keyboard SPACEBAR acts as a hardware PTT (Push-To-Talk) button, regardless of the cursor position. Therefore, if you use a desktop microphone, disconnect the PTT cable from the microphone cable jack, and leave the LockPTT button pressed, the microphone will always transmit audio to your radio. However, the PTT button will be disconnected, and you can transmit by pressing your computer's spacebar. If you want to transmit in voice mode and use the radio's original handheld microphone without any hardware modifications, you can activate VOX on your radio and transmit simply by pressing the spacebar.
 - **[HIDE WIN] / [SHOW WIN]:** Hides or restores all open windows to clear the map view.
 - **[CONFIG]:** Opens the main configuration menu.
 - **[SEARCH / EDIT]:** Opens the window for searching and editing past QSOs.
 - **[LOG ENTRY]:** Opens/Closes the main QSO entry window.
 - **[EXIT]:** Logs out and returns to the login screen.
 - **[FULL SCREEN]:** Switches the software to full screen.
-

3. CONFIGURATION (Window [SYSTEM CONFIG])

This is the first window to open. It manages the activation of all modules.

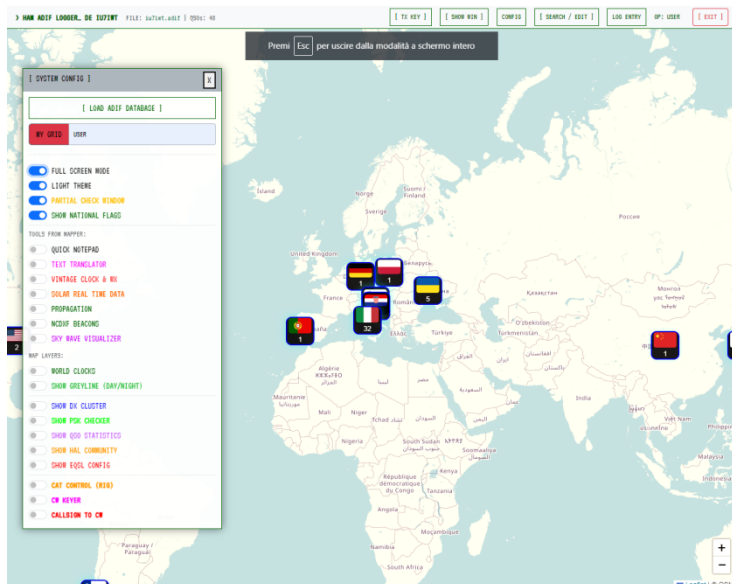


File Management and User Data

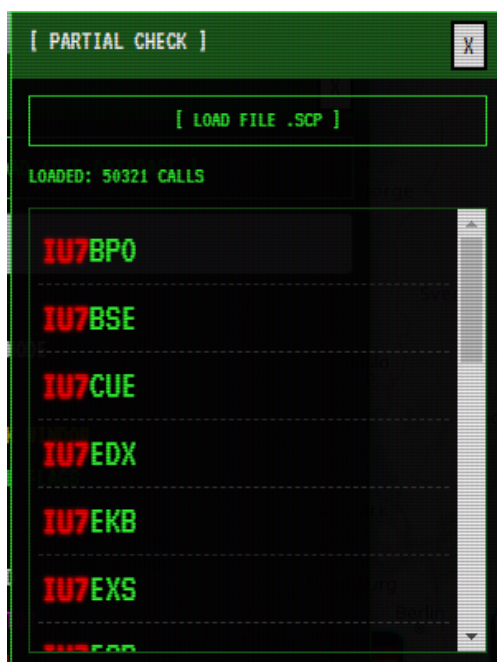
- **LOAD ADIF DATABASE:** Opens the browser's file selector. You must select your local .adif file. If you don't have one, create a blank text file and rename it log.adif.
- **MY GRID:** (Input Field) Enter your Locator here (e.g., JN81XX). This is essential for calculating distances, bearings, and weather.

General Switches

- **FULL SCREEN MODE:** Sets the browser to full screen.
- **LIGHT THEME:** Switches from "Hacker Green/Dark" mode to light mode (black on white).



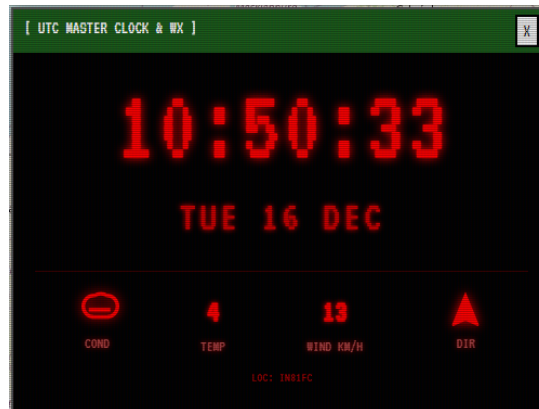
- **DISABLE SCANLINE:** Disables the old-style scanline graphic effect.
- **PARTIAL CHECK WINDOW:** Activates the name suggestions window.



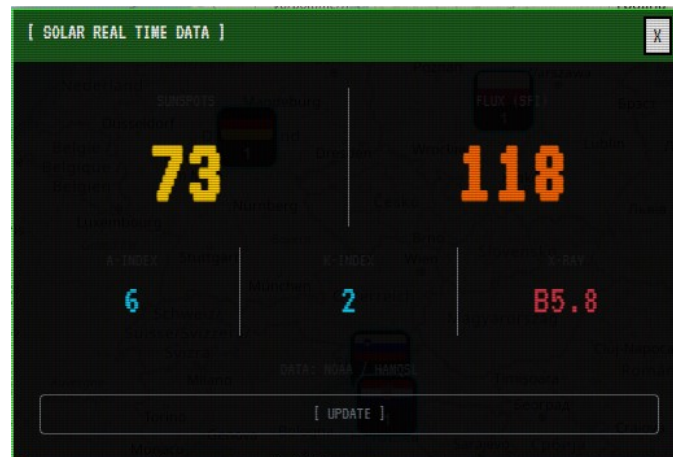
- **SHOW NATIONAL FLAGS:**

Enable flags on the global map based on the QSOs in your log. The flags summarize all QSOs grouped by country. Simply click on the flag you're interested in to see a list of QSOs made in that country. From the list that opens for each QRZ recorded with a special button called "Q," you can view the callsign profile on qrz.com. Next to the "Q" button, you'll find the "E" button, which will automatically send an EQSL using the eqsl.cc website, after you enter your credentials in the appropriate option.

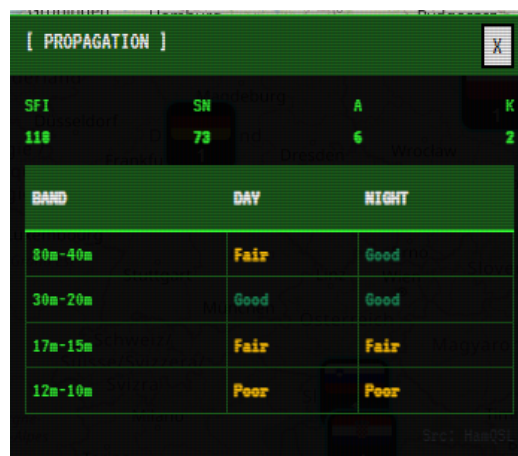
- **VINTAGE CLOCK & WX:** LED clock and local weather.



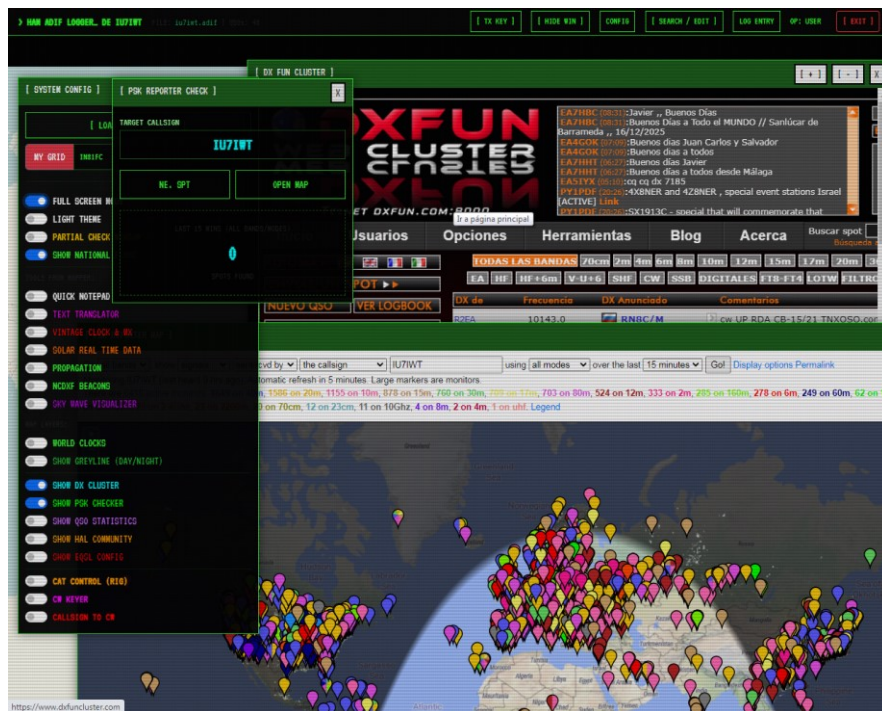
- **SOLAR REAL TIME DATA:** (SFI, Sunspots, ecc.).



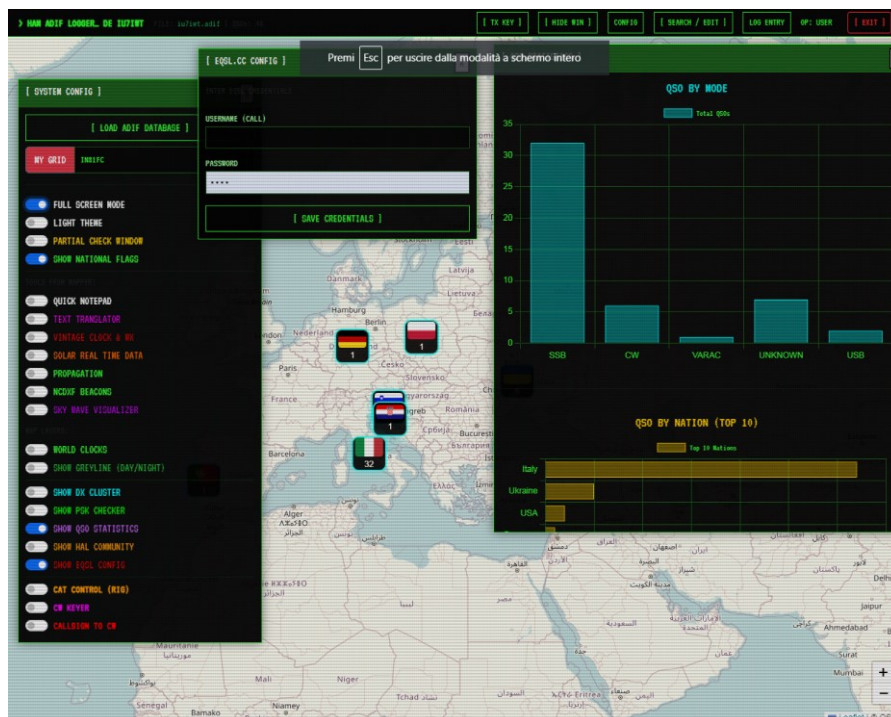
- **FORECAST HF PROPAGATION:**



- **SHOW DX CLUSTER:**



- **SHOW PSK CHECKER:**
- **SHOW QSO STATISTICS:**



- **HAM ADIF LOGGER_ COMMUNITY:**

Opens the Hal community login window.

With this new feature, contacts can easily exchange photos.

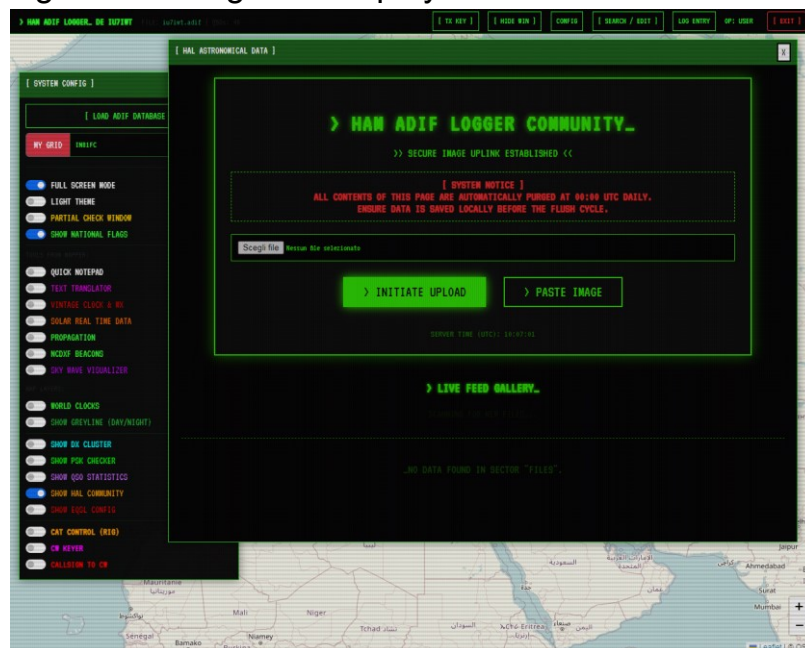
The content will be visible to all HamAdifCommunity users, as it is a shared photo gallery.

Photos can be uploaded from files or pasted from memory using Windows screenshots.

Shared content will be automatically deleted from the server at 00:00 UTC.

Photos uploaded to the community are made available to all users connected to the page and are visible at the bottom of the page.

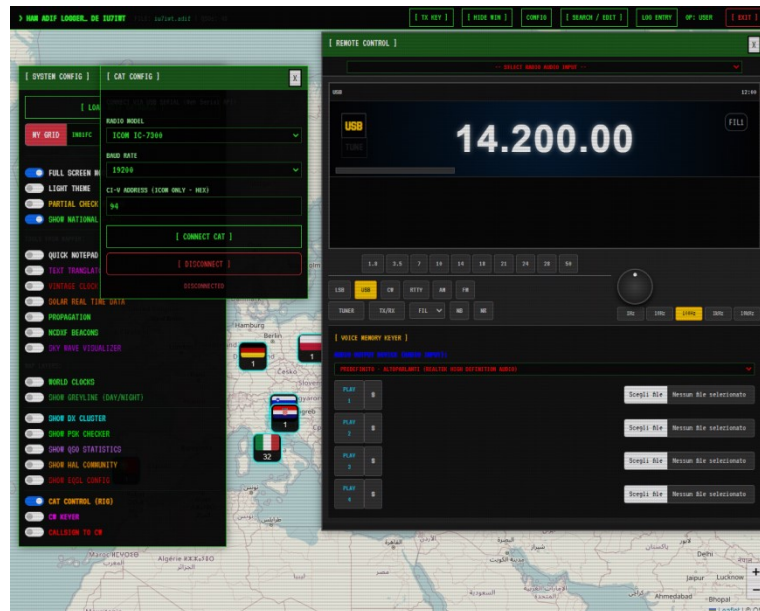
Clicking on the image will display the standard resolution.



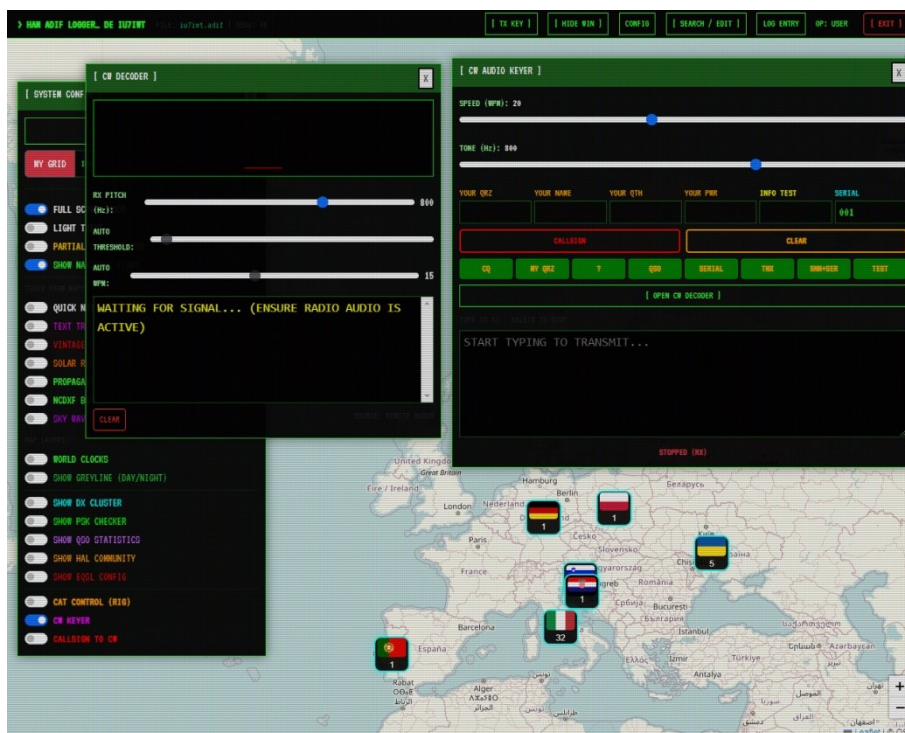
- **SHOW EQSL CONFIG:**

Radio Control

- **CAT CONTROL (RIG):** Activates the radio control system and opens the CAT Config window.



- **CW KEYER:** Activate the CW transmission panel.



- **CALLSIGN TO CW:** If enabled, pressing enter in the "Callsign" field of the Log will automatically send the callsign in CW.

4. RADIO & CAT SETUP (Windows [CAT CONFIG] & [REMOTE CONTROL])

[CAT CONFIG]

Configuring the serial connection.

RADIO MODEL: Select your radio:

- ICOM IC-7300, IC-7300 MK2, IC-7100, IC-7610, IC-9700
- YAESU FT-2000, FT-991°, FTX-1, FTDX-1200, FT-DX10, FT-DX101D
- KENWOOD TS-450S, TS-590, TS-890SE, TS-990SE
- **BAUD RATE:** Serial speed (e.g., 115200 or 19200). Must match the radio's menu.
- **CI-V ADDRESS:** (Icom only) Hexadecimal address (default 94 for IC-7300).
- **[CONNECT CAT]:** Start the Web Serial connection. The browser will ask for permission to use the COM port.
- **[DISCONNECT]:** Close the connection.

[REMOTE CONTROL]

Appears if CAT is active and connected.

- **Audio Input (Menu on top):** Select the audio source (e.g. USB Audio Codec) to display the spectrum (waterfall) in the black box.
 - **Digital Screen:** Faithfully reproduces the radio display (Frequency, Mode, S-Meter, Filters).
 - **Band Buttons:** (1.8 - 50) Quick band change.
 - **Mode Buttons:** (LSB, USB, CW, RTTY, AM, FM).
 - **TUNER:** Turn the tuner on/off.
 - **TX/RX:** Put the radio on air.
 - **FIL (Select):** Change the IF filter (1, 2, 3).
 - **NB / NR:** Active the NoiseBlanker e NoiseReduction function.
 - **VFO Knob:** Click and drag or use the mouse wheel on the virtual knob to change frequency.
 - **Step Buttons (1Hz - 10kHz):** Sets the tuning step of the knob.
 - **Voice Memory Keyer (bottom):** 4 audio memory banks. Load an MP3/WAV file and press "PLAY" to broadcast it, ideal for contests.
-

5. QSO LOG ENTRY (Windows [QSO LOG ENTRY])

This is the main operating window.

Data Fields (First Row)

- **DATE/TIME:** UTC date and time. They automatically update when opened or saved.
- **FREQ:** Frequency in MHz. It fills in automatically if the CAT is active. If it turns red and flashes, the frequency is missing.
- **MODE:** Operating mode (USB, CW, FT8, etc.). Auto-fill from CAT.
- **POWER:** Power used.
- **SERIAL/TEXT:** QSO progressive number (auto-incrementing).
- **[+] and [-] keys** to correct manually.

Note: If necessary, you can also enter some text in this box to be sent together with the 5NN. E.g.: 5NN+ 73, TU, E E, ecc.

Quick CW Panel (Second Row)

- **LED TX:** It lights up red when the radio is transmitting.
- **LED CW:** Flashes in time with the dots and dashes.
- **Input Text:** A small box for typing CW on the fly while logging.
- **[OPEN CW DEC]:** Open the decoder.
- **[CW AUDIO]:** Open the full Keyer.

Station Data (Third Row and Grid)

- **CALLSIGN:** The most important field. Enter the other party's callsign here.

Tip:

Press CTRL to quickly switch focus between this field and the CW input box.

If you are in this field and press the SHIFT (RIGHT) key, the text in the callsign field will be transmitted + "?" to ask the other party to repeat their QRZ.

- **Quick Button Grid (Below the Call):**
 - **Q:** Lookup on QRZ.com.
 - **CW:** Send the callsign in the box via CW.
 - **MY:** Send your callsign ("MY QRZ").
 - **?:** Send the question mark.
 - **QSO:** Send standard macros (RST, Name, QTH).
 - **CQ:** Send CQ call (CQ CQ FROM [YOUR_CALL]...).
 - **TNX:** Send final greetings (TNX FER ALL 73...).
 - **5NN+:** Send "5NN [Serial Number]".
 - **TEST:** Send contest macro "CQ [CALL] [INFO] TEST".
 - **SERIAL:** Send only the current serial number.
 - **QRZ?:** Send the text contained in the callsign "?" box
 -

Received Fields & Info

- **SER R:** Serial received from correspondent.
- **RST S / R:** Signal report (default 59).
- **NAME / GRID / QTH:** Name, Landlord, and City. If the name is already in the log or partial file, they are automatically filled in.

Action Keys (Bottom)

- **[CLEAR]:** Clears all fields without saving.
 - **[SAVE QSO]:** Save the contact to the local ADIF file, increment the serial number, and reset the form.
-

6. CW OPERATION

[CW AUDIO KEYER]

Generates audio tones to send to the radio in SSB/USB.

- **SPEED (WPM):** Speed Slider (5-40 WPM).
- **TONE (Hz):** Audio Tone Slider (es. 800Hz).
- **Macro Fields (MY QRZ, NAME, QTH...):** Fill in these fields with your information. They will be used by the macro keys.
- **Macro Fields (green):** They replicate the functions of the Log window (CQ, MY, QSO, SERIAL, TEST INFO (CONTEST NAME OR ASSOCIATION)).
- **Type to TX:** Large text area. Type here to broadcast immediately. Press DELETE or BACKSPACE to stop broadcasting immediately.
- **F9-F10 keyer:** Pressing F9 will output dots, and pressing F10 will output dashes. You can change the keyer speed with the SPEED slider.
- **F12 Vertical telegraph key simulator:** Every time you press the F12 key, the telegraph tone will be emitted and you can simulate a vertical telegraph key.

[CW DECODER]

Decoding received audio.

- **Canvas (Grafico):** Displays the waveform of the audio signal.
 - **RX PITCH:** Set the audio frequency to listen to (center the signal here).
 - **RX INPUT VOLUME:** Adjusting the input volume.
 - **CW TONE VOL:** CW tone volume adjustment.
 - **MANUAL SQ (SQUELCH):** manual setting of the squelch threshold beyond which the qrm is not decoded in telegraphy incorrectly.
 - **AUTO THRESHOLD / WPM:** The decoder automatically calculates the noise threshold and speed.
 - **Decoded Text: Text appears in yellow.**
 - o *Smart Function:* If the decoder recognizes a valid callsign (based on the DXCC database), it colors it RED. Clicking on it instantly copies the callsign to the Log window.
-

7. UTILITIES & TOOLS

[PARTIAL CHECK]

- Load a .scp (Super CheckPartial) file.
- As you type in the Log, compatible callsigns appear here.
- Use Up/Down Arrows to select and Enter to bring in the log.

[SEARCH& EDIT QSO]

- **SEARCH:** Search for a callsign in the uploaded log.
- **Results:** Click on a result to upload it to the edit form below.
- **Edit Form:** Allows you to change any QSO data.

Click **[SAVE CHANGES]** to overwrite the record in the file.

[QUICK NOTEPAD]

- Plain text area. Supports loading/saving .txt files. Useful for quick notes.

[TEXT TRANSLATOR]

- Paste some text and click the desired language (IT, EN, ES, FR, DE, RU) to translate it using Google APIs.
- **[BUFFERIZE] / [PRINT]:** You can accumulate multiple translations in a buffer and print them all at once.

[UTC MASTER CLOCK & WX]

- Back to the Future style watch.
- Also shows Weather (Temp, Wind, Direction) based on the MY GRID entered in the Configuration.

[SOLAR& PROPAGATION]

- Displays real-time solar data (SFI, K-Index) downloaded from NOAA/HamQSL.
- The propagation table suggests the bands (Good/Fair/Poor) for Day and Night.

[SKY WAVE VISUALIZER]

- Graph the Earth's curvature and the ionosphere.
- Visually calculates the "hops" needed to connect to the correspondent's Grid based on distance and frequency.

[NCDXF BEACONS]

- Map and list of beacons.
- Synchronizes with system clock: highlights in GREEN which beacon is transmitting at this exact moment on the selected frequency.

[QSO STATISTICS]

- Pie/bar charts to display "Most Used Modes" and "Top 10 Countries Connected".

[EQSL CONFIG]

- Enter your eQSL.cc Username and Password.
- Allows you to upload the QSO to QSL by clicking the yellow "E" button in the QSO list of the Log.

[QRZ REAL TIME]

If you activate this option, every time a new QRZ is decoded in red in the CW decoder window, it will automatically open a new window in the browser that will display the profile of the decoded QRZ on qrz.com.

[VOICE ROUTING & FX]

If you activate this function, a window will appear that allows you to route the audio from your devices. This means you can acquire audio from a headset or microphone via jack or USB, process the audio, and send it to your radio. The window is equipped with a convenient PTT button that will send your radio into transmission via CAT. By selecting the "TX KEY" option in the top bar, you can transmit by activating PTT with the space bar.

- **COMPRESSOR:** activate voice compression.
- **REVERB:** activates the reverb with the possibility of adjusting the duration and intensity
- **PARAMETRIC EQUALIZER:** with this effect you can parametrically equalize the low, medium and high tones.

[HAL DIGI CW]

By activating this window, you can use a new type of CW 2.0 telegraphy. This new digital mode is a hybrid mode inspired by telegraphy, revisited in a modern version.

The characteristics of this new mode are to transmit and decode signals even with high QRM and QSB. The system uses the classic Morse code, and each letter in the QSO is transmitted twice, deferred, and with a 100 Hz shift between each repetition. The system then compares each pair of letters, and if the verification is successful, the character in the decoder will be printed in green. If the character pair is not verified, it will be printed in orange, and only the first character received of the pair will be displayed.

In the window, you will find two bars, one yellow and one red, which are used to set the listening and transmitting frequencies on the waterfall. The only precaution you need to take is to position the two bars on the tracks you are receiving and which will be visible on the waterfall. The two bars cover the 100 Hz shift of the tones you will emit and listen to.

8. KEYBOARD SHORTCUTS & MACROS

Generali

- **CTRL (Left):** Move the cursor (Focus) between the "Callsign" field and the "CW Type-to-TX" field.
- **SPACE BAR:** Acts as PTT (Manual Transmit) if the text field is not active, or ALWAYS if the [TX KEY] key in the top bar is red.
- **ALT-GR:** This key acts as a physical telegraph key and you can use it as a common vertical telegraph key to type telegraphy in real time.

Macro CW (Shift + F-Keys)

Press SHIFT together with the F1-F8 keys to send quick messages:

- **Shift + F1:** CQ Call
 - **Shift + F2:** MY CALL
 - **Shift + F3:** ?
 - **Shift + F4:** QSO Info (RST, Name, QTH)
 - **Shift + F5:** Serial Number
 - **Shift + F6:** 73 / TNX
 - **Shift + F7:** 5NN TU
 - **Shift + F8:** TEST Macro
-

9. Example of the configuration file and master file for qrz partial check:

- **File for qrz partial check:**
<https://www.curiositaastronomiche.it/HAL/master.txt>
 - **File for ham adif logger_ auto config:**
<https://www.curiositaastronomiche.it/HAL/confighal.txt>
-

10. Troubleshooting

- **Browser:** Use only **Chrome or Edge**. Firefox does not support the Web Serial API required for CAT.
- **Audio/Decoder does not work:** Make sure you have selected the correct microphone/codecs in the REMOTE CONTROL window drop-down menu.
- **Distances/Meteo absent:** Go to CONFIG and enter your 6-digit Locator in "MY GRID".
- **Login Failed:** Please check that your username and password are written correctly.
- **eQSL Error:** Check your username and password in the EQSL CONFIG window.

LINK TO HAM ADIF LOGGER_ www.curiositaastronomiche.it/hal/index.php

YOUTUBE VIDEO TUTORIAL: <https://www.youtube.com/watch?v=cvukKUqNngE>